



Kenyan School Project

A small nonprofit with a great big heart

LATEST NEWS FROM KENYAN SCHOOL PROJECT



The Kenyan School Project (KSP) is excited to share updates on our recent visit to the Olemoncho Primary School and to look ahead to a fundraising event for an important upcoming medical visit, reaffirming our commitment to transforming the educational landscape for children in rural Kenya.

Recent Success: Inspection of Olemoncho Primary School Computer Lab

In December 2025, KSP Boardmember Ann Goss traveled to Kenya for a crucial visit to **Olemoncho Primary School**. The purpose of her trip was to inspect the newly completed computer lab, a project entirely funded by the generous donations of KSP supporters. This hands-on oversight is essential to the KSP mission, ensuring that every contribution is utilized efficiently and effectively to directly benefit the students.

While the students were away for their holiday break, Ann had a highly productive meeting with two dedicated members of the school management committee. This meeting was vital for discussing the operation, security, and long-term integration of the new technology into the school's curriculum.



Ann meets with members of the Olemoncho Management Committee

The Olemoncho Primary School's current state represents a tremendous success story for the Kenyan School Project. Since KSP's foundational involvement began in 2017, the school has undergone a remarkable transformation. Many of the subsequent improvements have stemmed directly from the groundwork and momentum initiated by KSP's initial projects. The new computer lab is a capstone achievement, providing students with essential 21st-century skills that will unlock future opportunities.



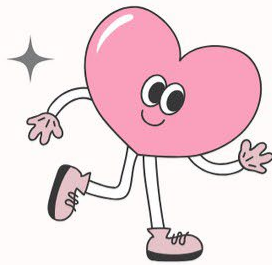
Olemoncho
Computer Lab



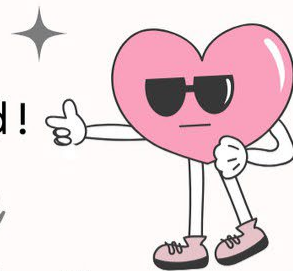
Critical Upcoming Visit: Medical Outreach to Children of the Rising Sun (CRS) School & Orphanage

To ensure the health and well-being of the hundreds of children and staff, the Kenyan School Project (KSP) is preparing for a vital Medical visit, led by KSP Board member, Cathy Doherty, NP and Nicole Givan RN. Additionally, we are hopeful that another Board member, Hal Seifert, will join Cathy and Nicole to assist with repairs at the orphanage and school. **This initiative requires immediate support, and we have set a fundraising goal of \$15,000** to fully cover the extensive costs of medicine, supplies, and logistics necessary to provide comprehensive care.

To help reach this crucial goal, KSP supporter Nicole Givan is spearheading a Valentine's Day fundraiser on **February 14, 2026 at Stones Throw Brewery (1009 Larrabee Avenue Bellingham, WA, 98225)**



Skip the Flowers,
Send Hope Instead!



A Family Friendly
Fundraiser and Silent Auction
Stones Throw Brewery

In fairhaven

10% of Drink Sales will be Donated
Saturday, February 14th

Can't make the event?
You can donate to the
Kenyan School Project
Directly



Non Profit Organization
Tax ID: 27-1389269
501 (c)(3)

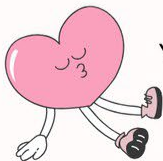
5pm-9pm

Live Music
with
Fickle Spring
6pm-8pm



In April, Nurse Nicole will travel to Kenya to live and volunteer at Children of the Rising Son Orphanage and School. She'll be joining Cathy, a Nurse Practitioner from Lopez Island who has faithfully served the orphanage for the past 10 years. Together, they will deliver medical care, health education, and vital resources—while also supporting the children with food, clothing, basic needs, and joyful experiences like field trips. Every dollar raised goes straight to the children. This Valentine's Day, join us for an evening rooted in connection, community, and compassion. You don't have to be present to win auction items.

Let's choose love with purpose—
Less Hallmark, More Humanity.



If you can't make it to this fun event, please consider donating to help us meet our goal. You can either scan the QR code in the poster above for Venmo,

donate with PayPal, or send a check to: Kenyan School Project, 4559
Center Rd, Lopez Island, WA 98261.

[Donate by PayPal](#)

Details for Upcoming Visit: Medical Outreach to Children of the Rising Sun (CRS) School & Orphanage

Health is inextricably linked to a child's ability to learn and thrive, making this medical intervention a cornerstone of our holistic approach to school improvement.

Based on insights from previous medical visits, Cathy and Nicole anticipates treating a wide array of ailments. The medical team will be prepared to address both acute and chronic conditions, including common infections, providing care for significant eye issues, conducting basic dental screenings, addressing issues related to malnutrition, and managing long-term conditions like AIDS. Furthermore, a crucial component of the visit will be providing essential women's health services to the female staff and older girls.

To maximize their impact, Cathy and Nicole will reside on-site for the entire month. This prolonged presence will allow them invaluable time to not only treat immediate medical needs but also to conduct thorough assessments of the long-term health infrastructure and requirements of the school and orphanage community.



A Special Field Trip: Expanding Horizons for CRS Orphanage

In addition to their medical duties, Cathy and Nicole are planning a unique and special event for the orphanage children: a field trip to the coast. This will be an opportunity to travel outside of their immediate area and witness the breadth of their country. This experience is designed to be an invaluable positive impact, offering the children a broader perspective of the world beyond the orphanage walls and fostering a sense of hope and exploration.

2025 trip to the
ocean



KSP and Children of the Rising Sun School Focus on Long-Term Sustainability and Partnership

The KSP Board understands that true transformation requires a long-term vision and commitment. To that end, the KSP board will be collaborating closely with the school management committee over the next few months on a comprehensive assessment to define the schools most critical, long-term priorities and projects. The goal is to identify initiatives that will not only enhance the school's immediate environment but, most importantly, bolster its self-sufficiency and overall sustainability for years to come. This partnership-based approach is key to ensuring that KSP's efforts lead to enduring change.

In addition, The Kenyan School Project has committed to launching a simple breakfast program for the 500 students at the CRS school for the remainder of the current school year. This initiative includes funding a cook, supplying ingredients for a nourishing porridge, as well as purchasing bowls and cups needed for serving the children breakfast each day.





You Make a Difference!

Your Support Makes a Big Impact

The Kenyan School Project (KSP) may operate on a small scale, but our targeted projects are designed for maximum impact, leading to a substantial and measurable difference in the schools and communities we serve. We pride ourselves on the careful management of all donations. Every dollar is channeled directly into project funding—the physical resources, infrastructure development, and programs that tangibly transform the institutions we work with. Because KSP operates with an all-volunteer board and has no paid staff or administrative overhead, the entire force of your donation goes a long way to directly support the children of Kenya.

Please consider making a donation today to support our ongoing efforts, including the I April Medical visit, and help us continue this vital work. We also encourage you to share this newsletter and KSP's mission with your network of friends and family.



[Donate](#)



[Check out our NEW Kenyan School Project
web site](#)



A small nonprofit with a
great BIG Heart



Kenyan School Project is a unique organization pledging maximum impact and transparency to our community of donors.

- ◆ We are 100% volunteer run. That means that 100% of your donation goes to where it's needed.
- ◆ We develop relationships with schools and respond to the needs they identify.
- ◆ We track the progress and impact of our programs.
- ◆ Kenyan School Project is an IRS approved 501(c)(3) organization so all donations are 100% Tax Deductible.
- ◆ Tax ID # is 27-1389269.

Donate


4559 Center Rd, Lopez Island,
WA, USA

Share on social



Check out our site →

Join us on our members app to stay updated and keep in touch.

 [Download & Join](#)